

KSD :2L Series

2L Series Two-position Two-way Solenoid Valve



Ordering Code

2L

Specification Code

2L : Two-Position Two-way
Solenoid Valve
(Steam Type)

170

Aperture of Flow Rate

170 : 17 mm
200 : 22 mm
300 : 30 mm
500 : 50 mm

15

Joint Pipe Bore

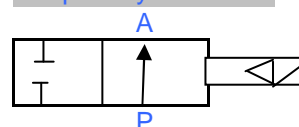
10 : 3/8"
15 : 1/2"
20 : 3/4"
25 : 1"
35 : 1 1/4"
40 : 1 1/2"
50 : 2"

AC110V

Standard Voltage

DC12V
DC24V
AC24V 50Hz/60Hz
AC110V 50Hz/60Hz
AC220V 50Hz/60Hz
AC380V 50Hz/60Hz

Graphic Symbol



Specification

Model	2L170-10	2L170-15	2L170-20	2L200-25	2L300-35	2L300-40	2L500-50
Working Medium	Air , Water , Steam						
Motion Pattern	Guide Type						
Type	Normal Close Type						
Flow Rate	17		22		30		50
Ports / Valve	4.8		12		20		48
Port Bore G&NPT	3/8"	1/2"	3/4"	1"	1 1/4"	1 1/2"	2"
Operation Fluid Viscosity	20 CST (Below)						
Working - pressure	Air : 0.1~1.5, Water : 0.1~1.5 , Steam : 0.1~1.5						
Max.Pressure Resistance	2.25						
Operation Temperature	-50~80						
Voltage Range	+10%						
Material of Body	Brass						
Material of Oil seal	PTFE						