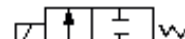


KSD : Two way solenoid valve

2W (Large Aperture) Series Two-position Two-way Direct Drive Type Solenoid Valve



Graphic Symbol



Ordering Code

2W	160	15	AC110V	V
<b style="background-color: #d3d3d3; padding: 2px;">Specification Code 2W : Two-Position Two-way Solenoid Valve -Direct Drive Type	<b style="background-color: #d3d3d3; padding: 2px;">Aperture of Flow Rate 012 : 1.2 mm 020 : 2 mm 025 : 2.5 mm 040 : 4 mm 160 : 16 mm 200 : 20 mm 250 : 25 mm 350 : 35 mm 400 : 40 mm 500 : 50 mm	<b style="background-color: #d3d3d3; padding: 2px;">Joint Pipe Bore 06 : 1/8" 08 : 1/4" 10 : 3/8" 15 : 1/2" 20 : 3/4" 25 : 1" 35 : 1 1/4" 40 : 1 1/2" 50 : 2"	<b style="background-color: #d3d3d3; padding: 2px;">Standard Voltage DC12V DC24V AC24V 50Hz/60Hz AC110V 50Hz/60Hz AC220V 50Hz/60Hz AC380V 50Hz/60Hz	<b style="background-color: #d3d3d3; padding: 2px;">Oil Seal Code Blank : NBR V : Viton (for high-temperature)

Specification

Model	2W160-10	2W160-15	2W200-20	2W250-25	2W350-35	2W400-40	2W500-50
	2W025-06	2W025-08	2W040-16				
Working Medium	Air , Water ,Oil						
Motion Pattern	Direct Drive Type						
Type	Normal Close Type						
Aperture of Flow Rate	16	20	25	35	40	50	
	2.5	4					
CV Valve	4.8	7.6	12	24	29	48	
	0.23	0.6					
Joint Pipe Bore G&NPT	3/8"	1/2"	3/4"	1"	1 1/4"	1 1/2"	2"
	1/8"	1/4"	3/8"				
Operation Fluid Viscosity	20 CST (Below)						
Working - pressure	Air : 0~0.7, Water : 0~0.5 , Oil : 0~0.5						
Max.Pressure Resistance	1.0						
Operation Temperature	-50~80						
Voltage Range	+10%						
Material of Body	2W : Brass 2S : Stainless Steel						
Material of Oil seal	NBR or Viton						