

KSD :VX Series

VX Series Two-position Two-way Solenoid Valve



Ordering Code

VX2120

08

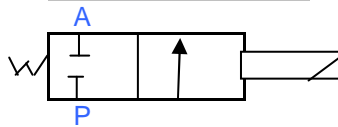
AC220V

Specification Code

Joint Pipe Bore
 06 : 1/8"
 08 : 1/4"
 10 : 3/8"
 15 : 1/2"

Standard Voltage
 DC12V
 DC24V
 AC24V 50Hz/60Hz
 AC110V 50Hz/60Hz
 AC220V 50Hz/60Hz
 AC380V 50Hz/60Hz

Graphic Symbol

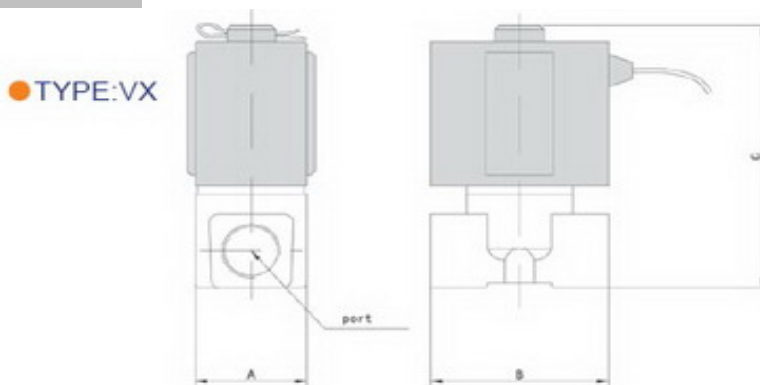


Specification

Model				
Working Medium	Air , Water , Steam			
Motion Pattern	Direct Drive Type			
Type	Normal Close Type			
Working-pressure	0~1.0Mpa			
Aperture of Flow Rate	3		13	
Joint Pipe Bore G&NPT	1/8"	1/4"	3/8"	1/2"
Operating Temperature Range	-5~150 C		-5~80 C	
Material of Oil Seal	Viton		NBR	

Overall Dimension

Type : VX



Dimension Sheet

Model	Bore	A	B	C
VX2120-06	1/8	25	40	64
VX2120-08	1/4	25	40	64
VX2120-10	3/8	48	68	110
VX2120-15	1/2	48	68	110