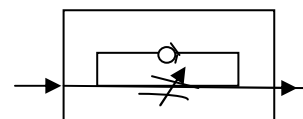


KSD : Flow Control Valve

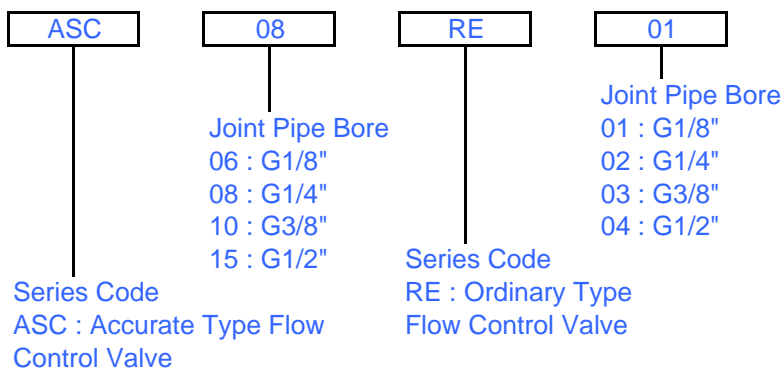
Flow Control Valve



Graphic Symbol



Ordering Code



Specification

Model	Accurate Type				Ordinary Type			
	ASC-06	ASC-08	ASC-10	ASC-15	RE-01	RE-02	RE-03	RE-04
Joint Pipe Bore	G 1/8"	G1/4"	G3/8"	G1/2"	G1/8"	G1/4"	G3/8"	G1/2"
Working Medium	Air							
Working-Pressure Range	0~0.95 Mpa							
Operating Temperature Range	0~60 C							