

TADA : F.R.L Combination (Airtac Style)

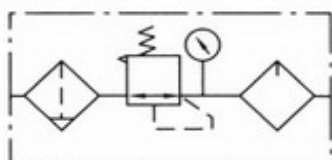
AC , BC Series Three-point Combination (F.R.L.Combination)
 AFC , BFC Series Two-point Combination (F.R.L.Combination)



Ordering Code

BC	3000	D
Type AC,AFC / Small Size BC,BFC / Middle Size	Joint Pipe Bore 2000 : G1/4" 3000 : G3/8" 4000 : G1/2"	Drain Type Blank : Differentail Drain D : Automatic Drain

Graphic Symbol



Specification

Model	AC2000	AFC2000	AFR2000	BC2000-4000	BFC2000-4000	BFR2000-4000
Operating Fluid	Air					
Joint Pipe Bore	G1/4"			G1/4" -1/2"		
Filtering Element Roughness	40 μm					
Range of Adjustable Pressure	0.05~0.85 Mpa					
Max.Adjustable Pressure	0.95 Mpa					
Ensured Pressure Resistance	1.5 Mpa					
Capacity of Filter Cup	15 CC			60 CC		
Capacity of Oil Feed Cup	25 CC			90 CC		
Suggested Lube	ISO VG 32 Or Same Grade Oil					
Weight	0.7 KG			0.9 KG		
Operating Temperature Range	5~60 C					
Material	Body	Aluminum Die-Casting Forming				
	Container Cup	PE				
	Protective Cup Cover	Iron				
Composing Element	Filter	AF2000			BF4000	
	Regulator	AR2000			BR4000	
	Lubricator	AL2000	AL2000		BC4000	BC2000-4000
	Filters the pressure regulator		AFR2000	AFR2000		BFR2000-4000